



Pictocross®

“**Pictocross®** is my concept of presenting crossword puzzles that combine pictures with regular crossword puzzle clues. The addition of images adds excitement for avid crossword puzzle solvers and provides hints for entry-level solvers as well. I hope you enjoy this IU Day Pictocross featuring IU football favorites as much as I enjoyed creating it.”

- Mickey Maurer, JD'67

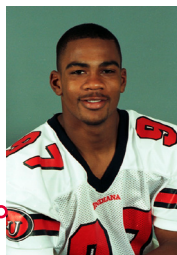
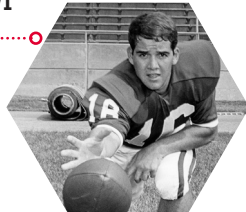
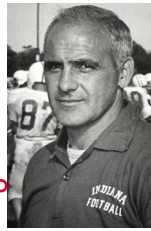


1	2	3	4		5	6	7	8		9	10	11	12	
13					14				15		16			
17					18					19				
20				21				22		23				
			24			25			26					
27	28	29					30		31			32	33	
34						35		36				37	38	
39					40					41				
42				43						44				
	45		46				47		48					
			49					50						
51	52	53				54			55			56	57	58
59					60		61	62			63			
64					65						66			
67						68					69			



ACROSS

- 1. Hot tubs
- 5. Tobacco plug
- 9. 2000 election scrap
- 13. Coach of IU Rose Bowl team
- 14. Rowed
- 16. Indy 500, e.g.
- 17. Actress Sommer
- 18. More pleasant
- 19. Arm bone
- 20. Sounds in "The Trolley Song"
- 22. IU football player Randy
- 24. Takeover
- 26. Bank arrangement allowing one to withdraw from or add to immediately: Abbr.
- 27. Coach Bo of 1945 Big Ten championship team
- 31. Quarterback of 1967 Rose Bowl team
- 34. " _____ a loaf is better than none"
- 35. Monopoly purchase
- 37. Sister
- 39. Greek "T"s
- 40. Leather bags for wine
- 41. Abhor
- 42. Act like a human?
- 43. Under siege
- 44. Actress Kelly of *The West Wing*
- 45. "What can I _____ you?"
- 47. IU football player Antwaan
- 49. Gazillion years
- 50. Frolic
- 51. IU football player Tevin
- 55. Prepare to travel again
- 59. Heisman Trophy winner, Ameche
- 60. Domain
- 63. Governing body of college football: Abbr.
- 64. Frost
- 65. A _____ dozen
- 66. Spirit
- 67. IU football player Courtney
- 68. Reclined
- 69. Some football plays



DOWN

- 1. Design detail
- 2. IU ranked 4th in this in 1967
- 3. "My Way" composer
- 4. Silk-screening needs
- 5. Certain diplomat
- 6. Bali _____
- 7. Path of many hail Marys
- 8. _____ Ewbank, Hoosier-born coach in 10 Down
- 9. Captain of IU 1967 team
- 10. _____ of Fame
- 11. Teenage woe
- 12. Letter starter
- 15. Excavating machines
- 21. Sport of Arnie and Jack
- 23. Star of the gridiron, often
- 25. IU football player Pete
- 27. Class or cell ender
- 28. Certain vegetable
- 29. IU football player Harold
- 30. Observant one
- 32. Slow mover
- 33. Weird
- 36. Mongol invader
- 38. Oscar winner Patricia
- 40. St. _____
- 41. IU football coach
- 43. Sonic sound
- 44. Butterfly, e.g.
- 46. IU football player Dan
- 48. IU football player Joe
- 51. Singer Vicki
- 52. Mixed bag
- 53. Term of endearment
- 54. Rocker Sedaka
- 56. Rights org.
- 57. Piccolo portrayer in *Brian's Song*
- 58. Sometime opponent of IU
- 61. Docs org.
- 62. Welcoming site at the Hula Bowl





Answer Key

S	P	A	S		C	H	A	W		C	H	A	D		
P	O	N	T		O	A	R	E	D		R	A	C	E	
E	L	K	E		N	I	C	E	R		U	L	N	A	
C	L	A	N	G	S				B	E	I	S	L	E	R
				C	O	U	P			D	D	A			
M	C	M	I	L	L	I	N			G	O	N	S	O	
A	H	A	L	F		H	O	T	E	L		N	U	N	
T	A	U	S		B	O	T	A	S		H	A	T	E	
E	R	R		B	E	S	E	T		M	O	I	R	A	
	D	O	F	O	R		R	A	N	D	E	L	E	L	
				E	O	N			R	O	M	P			
C	O	L	E	M	A	N				R	E	P	A	C	K
A	L	A	N		R	E	A	L	M		N	C	A	A	
R	I	M	E		D	I	M	E	A		E	L	A	N	
R	O	B	Y		L	A	I	N			R	U	N	S	

Carpe IU Diem.

CELEBRATE 24 HOURS



of INDIANA UNIVERSITY

IU DAY

Find more fun things to do at
iuday.iu.edu